



**Art. 24**  
Leaf-grate and/or  
gravel-grate suitable  
for roof drains  
from mm. 60 Ø  
to mm. 160 Ø



**Art. 24.1**  
Suitable for  
roof drains  
from mm. 60 Ø  
to mm. 200 Ø



**Art. 26**  
Suitable for  
roof drains  
from mm. 75 Ø  
to mm. 125 Ø

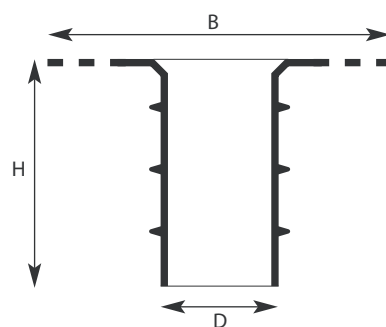
**“UNIVERSAL”** anti-backup roof drain is one of the best systems for connecting rainwater pipes and drains on flat roofs, gutters of multi-pitched roofs, and industrial buildings. It is particularly suitable for use with all kinds of APP or SBS modified bituminous membranes as well as liquid bitumen coatings, liquid membranes, cementitious waterproofing and polyurethane resins. The drain unit has been studied in its smallest details so as to optimize its characteristics thus eliminating problems caused by traditional drains available in the market. The drain is made from IGOM, a compound of synthetic rubbers specially designed to obtain physical, chemical and technical properties for a flexible product. IGOM has high resistance to UV rays, ozone and other atmospheric and chemical agents.

It can be used in a wide temperature range as it is extremely flexible at low temperatures and stable over time thanks to its physical and mechanical properties, which therefore assure maximum performance throughout its lifetime.

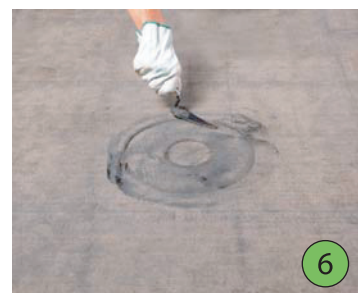
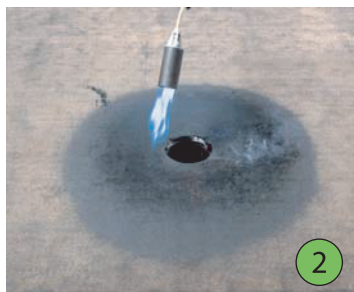
The drain consists of a truncated body available in various diameters solidly attached to the meshed flange net (5 x 5 mm) type to optimize adhesion of the waterproofing system to the flange. The stem piece of the unit has two or more strategically placed circular ribs which face outwards which when forced into the drain pipe prevent backing-up and form a perfect seal. The seal rings are compressed upwards when inserted into the drainpipe and thanks to this pressure fit they guarantee an optimal seal with any type of pipe.

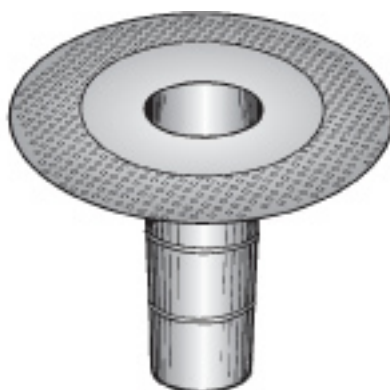
The passage of water vapour or backing up of liquids into the roof system and particularly into the insulation is thus eliminated.

ART.	150R	1.1R	13R	10R	14R	11R	16R	12R	17R	112R
DENOM	50	60	75	80	90	100	110	125	140	160
B	262	272	285	288	298	307	320	327	343	365
H	250	250	250	250	250	250	250	250	250	250
D	42	54	66	73	83	92	100	116	132	148

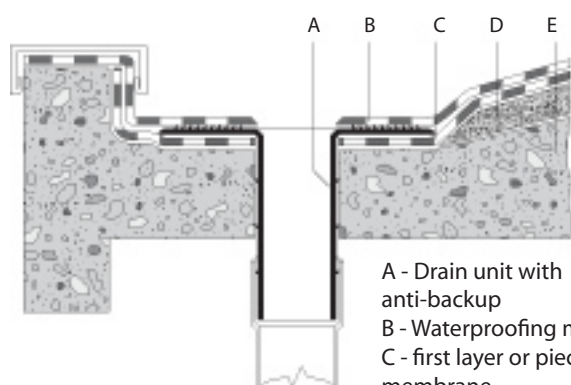


## INSTALLATION MANUAL

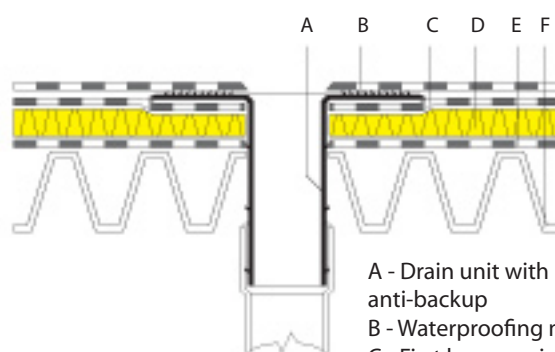




H mm. 250



A - Drain unit with anti-backup  
B - Waterproofing membrane  
C - first layer or piece of membrane  
D - Lightweight concrete to falls, or insulation  
E - Deck



A - Drain unit with anti-backup  
B - Waterproofing membrane  
C - First layer or piece of membrane  
D - Insulation  
E - Vapour barrier  
F - Deck

#### INSTALLATION METHOD

- 1 - Torch apply first layer of waterproofing membrane and cut out the area over the drain pipe.
- 2 - Heat the surface of the membrane until molten, then place the drain unit into position thus sealing the underside of the drain unit to the waterproofing layer.
- 3 - Spread the compound which exudes through the holes in the flange so as to fill the holes.
- 4 - Install the second layer of waterproofing heating the membrane itself.
- 5 - Cut the membrane no less than 10 mm from the edge of the drain unit and dress into the drain unit.
- 6 - Install the leaf guard.

**N.B.:** If only a single layer of waterproofing is being used, at point 1 use a 500 x 500 mm piece of the waterproofing membrane. Ensure that all areas are well pressed and sealed.

#### DESCRIPTION OF SPECIFICATIONS

Supply and install ITALPROFILI® Universal "R" drain unit made from flexible synthetic rubber IGOM CE having a meshed flange which must extend at least 12 cm beyond the circumference of the drain pipe, a 250 mm long anti-backup tail piece suitable for pipe Ø..... complete with leaf guard or gravel grate.